

LINEARNI ELEMENTI IN POVRŠINE



VIR:

- Tonka Tacol: Osnove likovnega jezika, Debora, Ljubljana, 1994
- internet

Površine

- Vsak predmet ima svojo površino, ki jo lahko vidimo in otipamo. Lahko je gladka ali hrapava, bleščeča ali nebleščeča, motna.
- Površino lahko ponazorimo s točkami, črtami ali barvo.
- V risbi jo praviloma ponazorimo kot neenakomerno, razgibano zaporedje vzorcev.



Naloga

Z linearnimi elementi (točko in črtami) nariši risbo po spominu, domišljiji, po poprejšnjem opazovanju narave.

Motiv si izbereš sam/a.

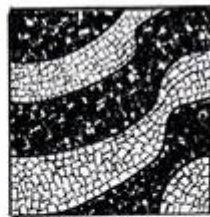




wood 1



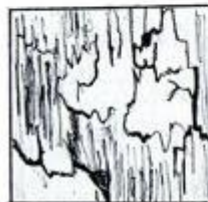
cracked earth



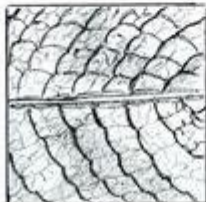
paved road



broken glass



cracked paint



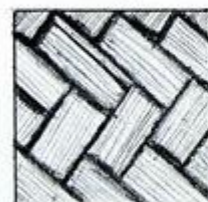
leaf



windy grass



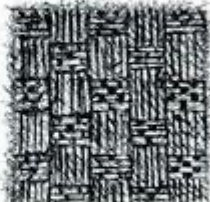
pavement



basket texture



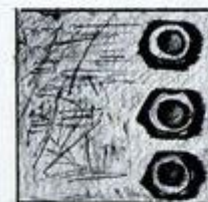
wood 2



little mat



water drops



old metal surface



sand



rain drops



crumpled paper



tiles structure



zebra lines pattern



curly



artistic

